

---

# Vault Platform Prototype

---

## Use & Safety Instructions

*Funding and support for this project  
has been provided by the  
State of Washington,  
Department of Labor & Industries,  
Safety & Health Investment Projects*

**Grant #2015Y00299  
2016 - 2017**

### **SHIP Grant Participants**

- **City of Marysville**
- **City of Edmonds**
- **City of Puyallup**
- **City of Seattle**

**Extreme Ergonomics – Design & Development**



---

# Set-up Instructions

---

## IMPORTANT

---

***The supplied unit is a prototype unit only.***

***NOT A PRODUCTION MODEL!***

***It is provided to be used for***

***experimentation, evaluation and testing only.***

The supplied platform prototype should NOT be used as an everyday device nor should it be used over a vault where injury will occur should the unit fail.

*Experimentation, testing and evaluation should be performed over a “mock” vault such as one defined with 4X4 lumber or a shallow ditch or on any flat surface.*

### ***PRIOR TO EACH USE***

- Check that all joints are flexible and in good condition (no rust or loose bolts)
- Ensure all cap screws, fasteners or allen bolts are tightened to manufacturer (80-20 Teco) specifications of 10 inch –pounds
- Ensure all connections, components and hitch pins are secure, properly functioning and without “play”
- If any fasteners require replacing or tightening, each should be completely removed and the use of thread lock such as Locktite brand should be used and allowed to cure before platform usage

---

# Set-up Instructions

---

## Step 1

Unfold the platform base and place on flat, level ground



---

# Set-up Instructions

---

## Step 2

Insert floor grate into frame





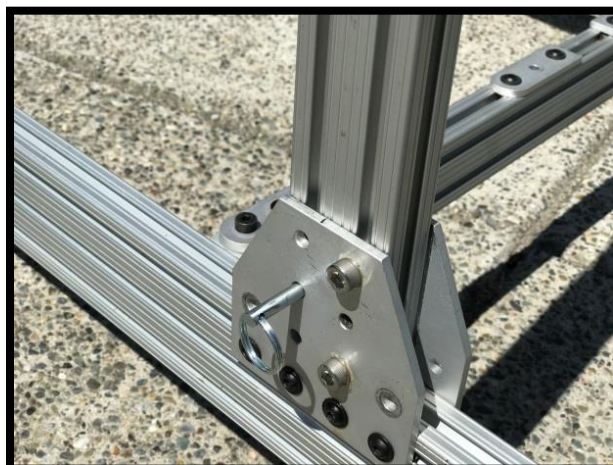
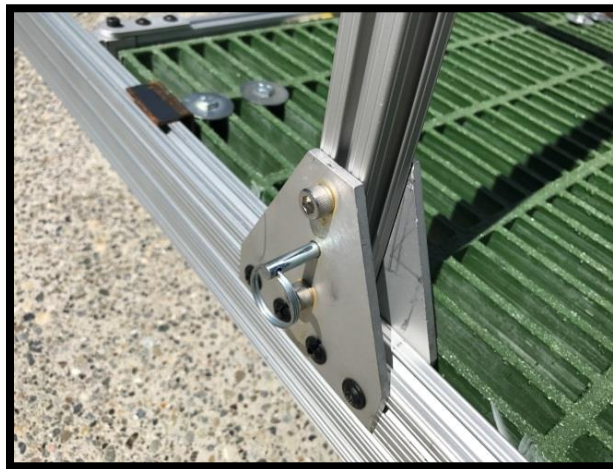
---

# Set-up Instructions

---

## Step 3

Unfold railing; insert legs into frame as shown; secure with 4 hitch pins



---

# Set-up Instructions

---

## Step 4

Install 2 mid-side rails using hitch pins



---

# Set-up Instructions

---

## Step 5

Install rear rail as shown, with 2 hitch pins





---

# Set-up Instructions

---

## Final Note

### **For Observation Purposes ONLY**

With two persons lift the assembly and place over vault opening. Ensure the 4 feet are in contact with the ground and platform does not wobble. Adjust leveling feet or shim as required.

